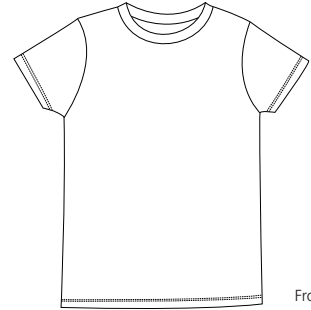
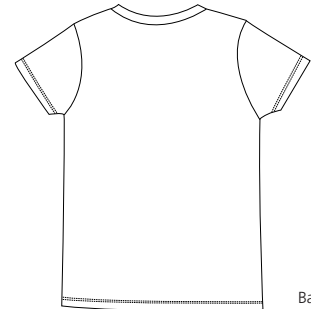


Ladies Short Sleeve District Tee



Front



Back

DT200

- * 3.69-ounce * 100% ring spun combed cotton * 40-singles * Preshrunk * Colorfast
- * Fine knit softness * Slimmer cut through body and sleeves

Care Instructions:

Machine wash cold, wash inside out, wash with like colors. Do not bleach. Tumble dry low. Warm iron if necessary.

Finished Measurements in Inches

Size	S	M	L	XL	XXL	Plus 1X	Plus 2X
Chest	15.25	16	16.75	17.5	18.5	19.5	20.5
Body	23.75	24.5	25.5	26	26.5	27	27
Sleeve	5.5	5.75	6	6.25	6.5	6.75	6.75

Chest width measured 1" below armhole. Body length measure from high point shoulder to hem. Sleeve length measured from shoulder seam to hem.

Colors

	Bright Green
	Brilliant Red
	Chocolate Brown
	Denim
	Fatigue
	Heathered Alpine
	Deep Navy
	Heathered Red
	Khaki
	Midnight Black
	Steel
	White
	Pink
	Fuchsia
	Cardinal

Please Note:

Colors shown are approximate and for reference only. For closest match see PMS colors, or for exact match, returnable samples and grommeted samples are available.

Color Chart

Colors	White	Pink	Denim	Fatigue	Khaki	Fuchsia	Steel
Textile PMS	11-4201TC	12-1310 TC	No Match	17-0220 TC	16-1320 TC	17-2230 TC	18-0201 TC
General PMS	663 C	706 C	No Match	8321 C	4665 C	212 C	425 C

Colors	Deep Navy	Heathered Red	Midnight Black	Bright Green	Cardinal	Brilliant Red	Chocolate Brwn	Heatherd Alpine
Textile PMS	19-4104 TC	No Match	19-4305 TC	16-6240 TC	19-1934 TC	17-1664 TC	19-1015 TC	No Match
General PMS	432 C	No Match	Process Black	347 C	202 C	186 C	440 C	No Match