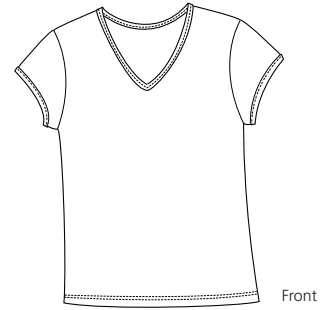
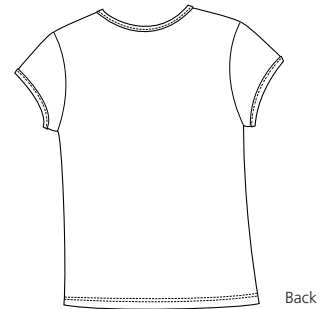


Ladies V-Neck Tee



Front



Back

DT204V

- * 5.9-ounce * 100% ring spun combed cotton * 1 x 1 rib * Double-needle hem
- * Self-fabric binding

Care Instructions:

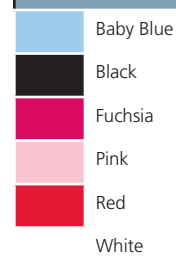
Machine wash cold, wash inside out, wash with like colors. Do not bleach. Tumble dry low. Warm iron if necessary.

Finished Measurements in Inches

Size	S	M	L	XL	XXL	Plus 1X	Plus 2X
Chest	14.75	15.75	16.75	17.75	18.75	21	23.5
Body	22	23	24	25	26	28.75	31.5
Sleeve	4	4.25	4.5	4.75	5	6	7
Hem	15	16	17	18	19	21.5	23.5

Chest width measured .5" below armhole. Body length measured from high point shoulder to hem. Sleeve length measured from shoulder seam to hem.

Colors



Please Note:

Colors shown are approximate and for reference only. For closest match see PMS colors, or for exact match, returnable samples and grommeted samples are available.

Color Chart

Colors	Baby Blue	Black	Fuchsia	Pink	Red	White
Textile PMS	15-4020TC	19-4203TC	17-1842TC	13-1906TC	19-1664TC	11-0601TC
General PMS	283C	Process Black	214C	1895C	186C	No Match