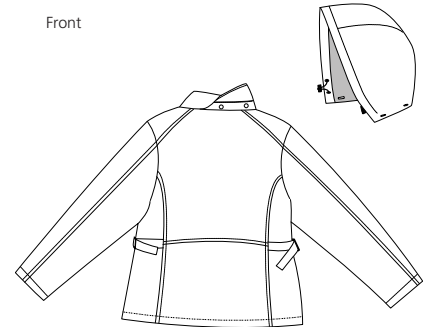


Ladies Legacy Jacket

PORT AUTHORITY®



Front



Back

L764

- * 100% polyester shell * 100% polyester mesh upper back lining
- * 100% nylon lining on lower back/front/sleeves * Contrasting neck trim
- * Lower slash zip pockets * Port Pocket™ access * Princess cut
- * Adjustable buckles at sides * Button-off hood * Roll-up cuffs

Care Instructions:

Machine wash cold separately, gentle cycle. Mild detergent, no bleach. Tumble dry low, cool iron if needed.

Finished Measurements in Inches

| Size | XS | S | M | L | XL | XXL | Plus 1X | Plus 2X |
|----------------------|------------|------|--------------|----|-------------------------|------|---------|---------|
| Length | 24 | 25 | 26 | 27 | 28 | 28.5 | 29 | 30 |
| Chest | 18.5 | 19.5 | 20.5 | 22 | 23.5 | 25 | 26.5 | 29 |
| Sleeve | 31 | 32 | 33 | 34 | 34.5 | 35.5 | 36 | 36 |
| Sweep | 40 | 42 | 44 | 47 | 50 | 53 | 56 | 61 |
| Areas for Decoration | Left Chest | | Port Pocket™ | | Inside Left Zipper Flap | | | |

Chest width measured 1" below arm hole. Body length measured from back neck seam to hem. Sleeve length measured from center back seam to hem.

Colors

| | |
|--|---------------------|
| | Black/Steel Gray |
| | Dark Navy/Red |
| | Pale Aqua/Dark Navy |
| | Red/Dark Navy |
| | Stone/Dark Navy |

Please Note:

Colors shown are approximate and for reference only. For closest match see PMS colors, or for exact match, returnable samples and grommeted samples are available.

Color Chart

| Jacket Colors | Black | Dark Navy | Pale Aqua | Red | Stone |
|---------------|---------------|-----------|------------|-----------|-----------|
| Textile PMS | 19-4006TC | 19-4024TC | 13-4411TC | 19-1762TC | 14-4501TC |
| General PMS | Process Black | 5395C | 290C | 201C | 7528C |
| Accent Colors | Dark Navy | Red | Steel Grey | | |
| Textile PMS | 19-4024TC | 7420C | 431C | | |
| General PMS | 5395C | 19-1860TC | 18-4011TC | | |